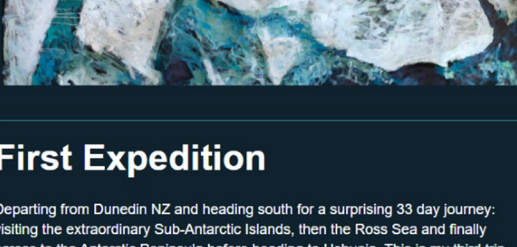


Lea Kannar-Lichtenberger

Studio Newsletter

Read about my news and latest updates.

2026 has begun with lots of promise of new adventures for me. On February 7 I left Australia for the first of 2 polar research expeditions...

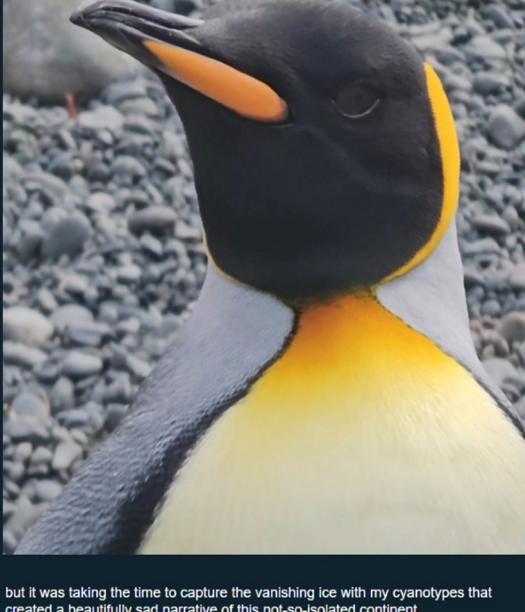


First Expedition

Departing from Dunedin NZ and heading south for a surprising 33 day journey: visiting the extraordinary Sub-Antarctic Islands, then the Ross Sea and finally across to the Antarctic Peninsula before heading to Ushuaia. This is my third trip with Aurora Expeditions and it was truly EPIC!



so many amazing sights and a new favourite penguin for me... the King

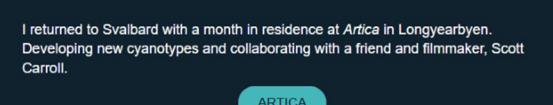


but it was taking the time to capture the vanishing ice with my cyanotypes that created a beautifully sad narrative of this not-so-isolated continent.



With only a 12-day break to catch my breath

Second Expedition



I returned to Svalbard with a month in residence at *Artica* in Longyearbyen. Developing new cyanotypes and collaborating with a friend and filmmaker, Scott Carroll.

ARTICA



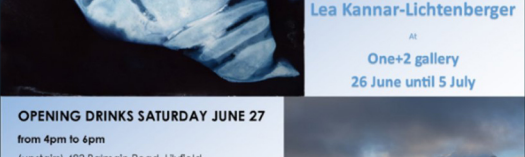
Plus lots of hot chocolates at my favourite cafe... Huskies



Art in Sydney

I will be having an exhibition of my Polar Artworks at the gallery at One+2 Studios June 26 to July 5 2026

You are invited to the opening of this exhibition Saturday June 27 from 4 to 6pm



OPENING DRINKS SATURDAY JUNE 27
from 4pm to 6pm
(upstairs) 483 Balmain Road, Lilyfield



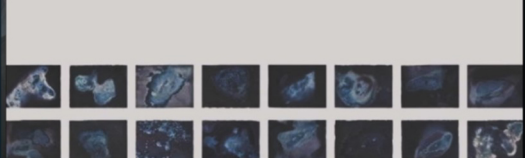
Exhibition hours:
Friday to Sunday 10am until 5pm



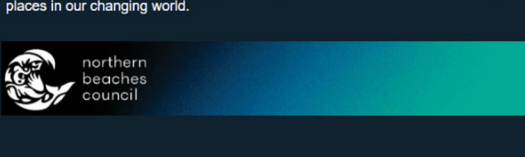
I'M A FINALIST

Environmental Art & Design Prize

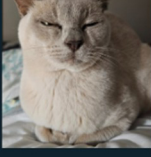
Northern Beaches 2026



You can see a combination of my 2026 Polar examinations and research with cyanotypes at the Northern Beaches Environmental Art Prize this August. North & South. 40 of my cyanotypes that capture the last moments of these icy places in our changing world.



Finally



Both Luna and I wish you all a safe, creative and happy year.

Contact Me

Sydney NSW, Australia

Visit our social accounts



Check out my website →